

# INSTALLATION INSTRUCTIONS

## EQUIPMENT REQUIRED:

WIRING ACCESS LOCATION: SUV3, SUV4

## DRILL BITS:

HITCH REQUIRES 5/8" PIN & CLIP IF STABILIZING PIN IS NOT INSTALLED

WRENCHES: (TIGHTEN ALL FASTENERS WITH TORQUE WRENCH) 3/4, 7/8, 17mm

VEHICLE

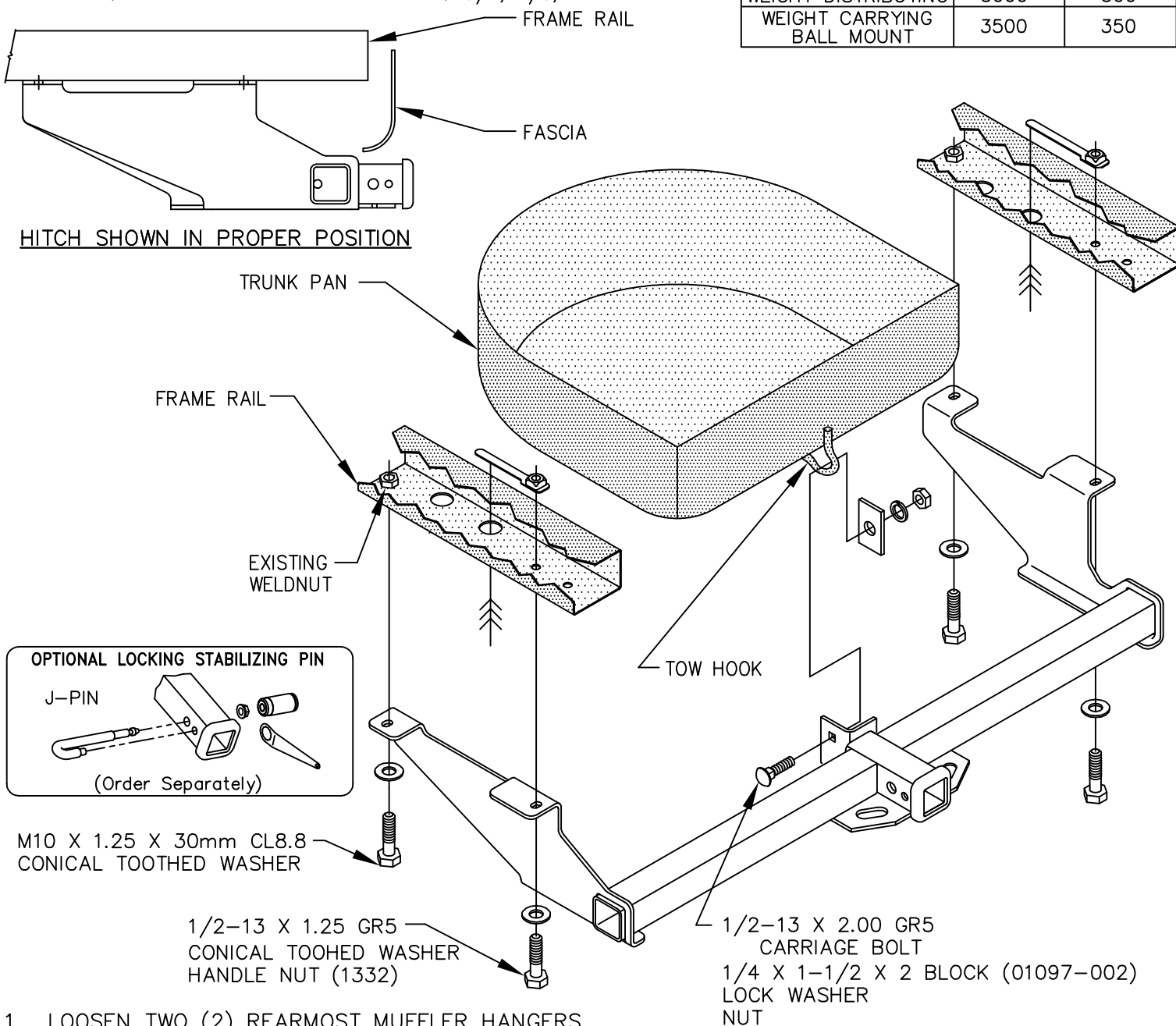
HITCH NO.

MAZDA MPV  
(MODELS W/O GROUND EFFECTS)

75108

DO NOT EXCEED LOWER OF  
TOWING VEHICLE MFR'S RATINGS OR

HITCH TYPE ▼	MAX GROSS TRLR WT(LB)	MAX TONGUE WT(LB)
WEIGHT DISTRIBUTING	5000	500
WEIGHT CARRYING BALL MOUNT	3500	350



1. LOOSEN TWO (2) REAR MOST MUFFLER HANGERS.
2. RAISE HITCH INTO POSITION.
3. PUSH MUFFLER OUT OF THE WAY AND INSTALL FASTENERS AS SHOWN ABOVE.
4. REINSTALL MUFFLER HANGERS.

TIGHTEN ALL M10 CL8.8 FASTENERS TO 38 LB-FT.

TIGHTEN ALL 1/2 GR5 FASTENERS TO 75 LB-FT.

THIS PRODUCT COMPLIES WITH SAFETY SPECIFICATIONS AND REQUIREMENTS FOR CONNECTING DEVICES AND TOWING SYSTEMS OF THE STATE OF NEW YORK AND V.E.S.C. REGULATION V-5.

APPROX WEIGHT (LB.)

FASTENER KIT

51

K75108

NOTE: Check hitch frequently, making sure all fasteners and ball are properly tightened. If hitch is removed, plug all holes in trunk pan or other body panels to prevent entry of water and exhaust fumes. A hitch or ball which has been damaged should be removed and replaced. Observe safety precautions when working beneath a vehicle and wear eye protection. Follow car maker's specs for maximum trailer weight and tongue weight. Do not cut access or attachment holes with a torch.